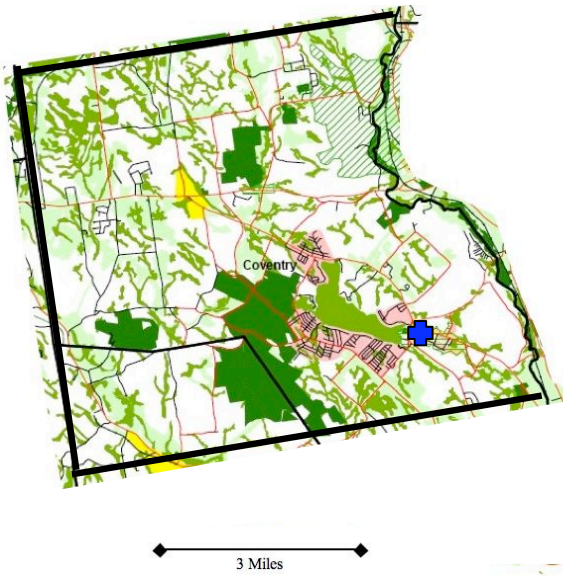
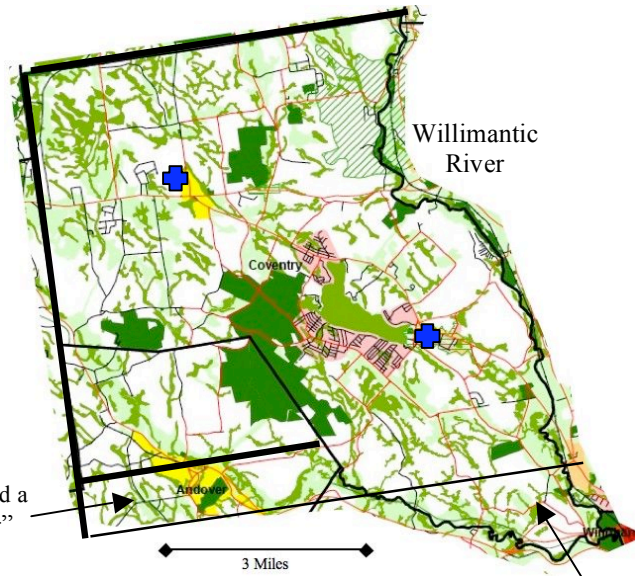


EARLY COVENTRY LAND BORDERS & SOCIETIES

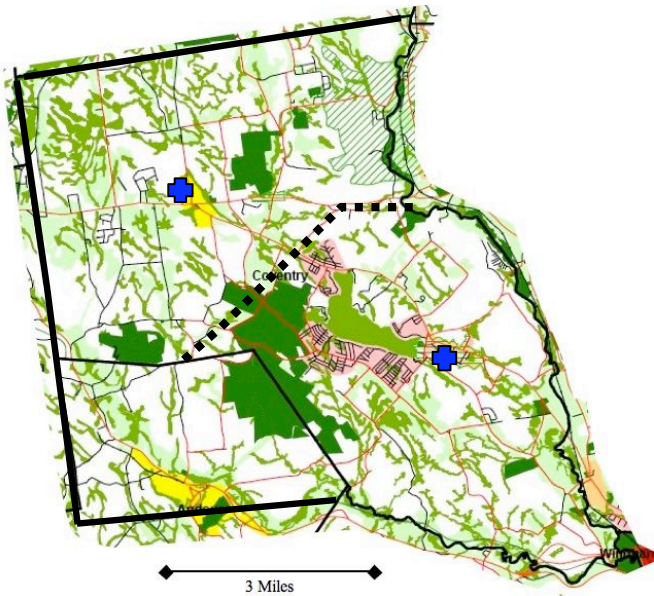
⊕ Society Churches



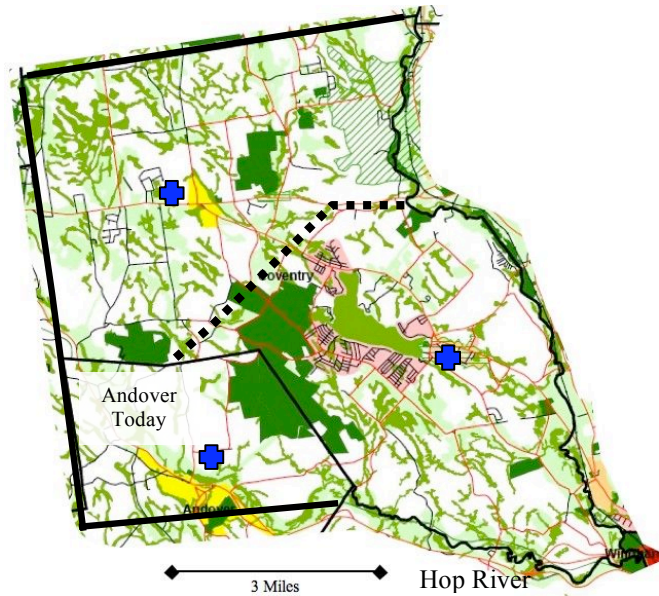
1712- First Land Allocation, Approx. Six Miles Square, Showing First Society Church



1723- The Annexation of land in the Southeast corner- The "Mile and a Quarter" from Peter Mason, the remainder from Buckingham & Clark 1713/14



1740- The creation of the Second Society. Showing its Church (upper left)



1747- The creation of the Andover (3rd) Society. Showing its Church (lower left), The town of Andover Incorp. 1848